

# COMPOSITE STANDS

Get your gear off the ground.

## PRODUCT CATALOG

**The WORLD'S LIGHTEST JACK STANDS**  
that address personal injury risk and improve functionality,  
increasing productivity and operational savings.



**'Designed and Certified in Australia'**

Independently tested by University of Southern Queensland (USQ), compliant with Australian Standards: AS 2538:2016 | AS 2693:2007 and Patented.

8t

## Forklift Jack Stand 89mm Column

140mm

180mm

1-1



Specifically designed to safely jack and support forklifts during repair and maintenance:

- 8t (8,000kg) Working Load Limit
- Solid steel engagement head, 100mm dia
- Composite column, 89mm dia
- CNC machined aluminium base, 145mm dia
- Corrosion resistant powder coating
- 10 year UV vinyl wrap

**N.B.** Interchangeable and stackable height adjusting inserts available. Inserts sold separately.

140mm	2.8kg	FJ-001-J-140	\$170.00
180mm	2.95kg	FJ-001-J-180	\$180.00

Prices in USD. Excludes freight, taxes and any local charges.

8t

## Height Adjusting Inserts 89mm Column

20mm  
+  
40mm20mm  
+  
40mm

1-2



- Specifically designed to fit: 8t forklift jack stand
- Solid steel engagement head
- Interchangeable and stackable height adjusting inserts
- CNC machined for precision
- Powder-coated to prevent corrosion
- Customised engagement head available on request
- Compliant with applicable regulatory standards

**N.B.** Stands sold separately.

20mm insert	1.3kg	FJ-001-20	\$25.00
40mm insert	2.3kg	FJ-001-40	\$35.00

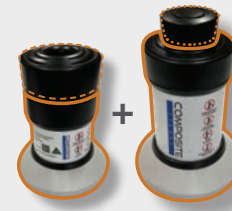
Prices in USD. Excludes freight, taxes and any local charges.

8t

## Forklift Jack Stand Kit 89mm Column

40mm  
+  
140mm20mm  
+  
180mm

1-3



Specifically designed to safely jack and support forklifts during repair and maintenance:

- 8t (8,000kg) Working Load Limit
- Solid steel engagement head, 100mm dia
- Interchangeable and stackable height adjusting inserts
- Composite column, 89mm dia
- CNC machined aluminium base, 145mm dia
- Corrosion resistant powder coating
- 10 year UV vinyl wrap

\*+ equals kit.

40mm insert	FJ-001-J-140-40	\$205.00
140mm stand		
20mm insert	FJ-001-J-180-20	\$205.00
180mm stand		
40mm insert		
140mm stand	FJ-001-Kit	\$390.00
20mm insert		
180mm stand		

Prices in USD. Excludes freight, taxes and any local charges.

8t

## Placement Hook 89mm Column

1-4



Hook

- Our custom designed placement hook will make moving your forklift jack stands in and out of position a breeze
- Prevents the need to get under a non-supported load

**N.B.** Stand sold separately.

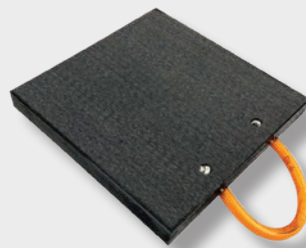
0.5kg	RV-SRC-Hook	\$55.00
-------	-------------	---------

Prices in USD. Excludes freight, taxes and any local charges.

8t

## Load Pad

1-5



High performing hardstand pads offering incredible strength, rigidity and load distribution - they're built to last:

- Engineered from high performance UHMW polyethylene
- Resistant to water, oil and chemicals
- Lightweight and easy to handle
- Stored and positioned with minimal effort

LxWxH (mm)	Load Capacity (tonnes)	Weight (kgs)		
300x300x30	4	2.7	300-8	\$45.00
400x400x40	10	6.4	400-10	\$85.00

Prices in USD. Excludes freight, taxes and any local charges.

8t

## Forklift Carriage Support

1-6

COMING SOON

Prices in USD. Excludes freight, taxes and any local charges.

## Get your gear off the ground.

The **WORLD'S LIGHTEST JACK STANDS** that address personal injury risk and improve functionality, increasing productivity and operational savings.



### 'Designed and Certified in Australia'

Independently tested by University of Southern Queensland (USQ), compliant with Australian Standards: AS 2538:2016 | AS 2693:2007 and Patented.

## 12.5t

### Bucket Stand 125mm Column



2-1

Specifically designed to safely support buckets and booms, of machinery during repair and maintenance:

- 12.5t (12,500kg) Working Load Limit
- Solid steel engagement head
- Composite column, 125mm sq
- CNC machined 16mm aluminium plate base, 920mm dia
- Chromoly bracing tubes
- Corrosion resistant powder coating
- 10 year UV vinyl wrap

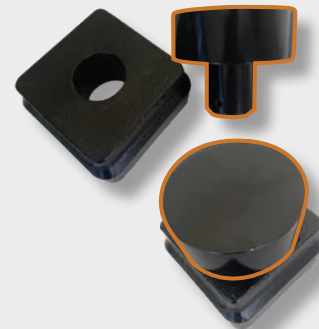
**N.B.** Interchangeable height adjusting inserts available. Inserts sold separately.

1400mm	57kg	CPS-025-005-1400	\$2,980.00
1500mm	58kg	CPS-025-005-1500	\$3,035.00
1600mm	59kg	CPS-025-005-1600	\$3,120.00
1700mm	60kg	CPS-025-005-1700	\$3,180.00
1800mm	61kg	CPS-025-005-1800	\$3,240.00
2000mm	63kg	CPS-025-005-2000	\$3,300.00
2100mm	64kg	CPS-025-005-2100	\$3,360.00
2200mm	65kg	CPS-026-005-2200	\$3,420.00

Prices in USD. Excludes freight, taxes and any local charges.

## 12.5t

### Height Adjusting Insert 125mm



2-2

50mm

100mm

- Specifically designed to fit: 12.5t bucket stand
- Solid steel engagement head
- Interchangeable height adjusting inserts
- CNC machined for precision
- Powder-coated to prevent corrosion
- Customised engagement head available on request
- Compliant with applicable regulatory standards

50mm	5.75kg	125-I-50-R	\$105.00
100mm	10.5kg	125-I-100-R	\$130.00

Prices in USD. Excludes freight, taxes and any local charges.

## 12.5t

### Swivel & Winged Ball Head 125mm



2-3

The swivel ball head attachment is a stand alone component that slips straight into the cap of our jack stands to support and align with angled frame of a dozer push arm.

#### 12.5t Swivel Head

4.5kg	T3-Swivel-Head	\$335.00
-------	----------------	----------

The Winged Swivel Ball Head attachment is a stand alone component that slips straight into the cap of our Jack Stands to support and cradle the dozer push arm(s) during work.

**N.B.** The winged swivel ball head attachment DOES NOT fit in the height adjusting inserts and you may ONLY place either one or the other in the cap of the jack stand.

#### 12.5t Winged Head

310mm	8.6kg	T3-Swivel-Wing	\$415.00
-------	-------	----------------	----------

Prices in USD. Excludes freight, taxes and any local charges.

## 12.5t

### Bucket Stand Wheel Kit Wheels & Mounting Assembly x 3



2-4

The swivel castor wheels (x3) are specifically designed to mount on to the base of the bucket stand. Using a foot lever to lift and lock into place enabling easy manoeuvrability in and around the workshop floor for a single user.

- Heavy duty industrial grade wheel (100 mm dia)
- 360 degree swivel castor
- Powder coated mounting assembly
- Foot lever lift

**N.B.** Bucket stand sold separately.

250mmx150mm	7.8kg	BS-Wheel Kit	\$365.00
-------------	-------	--------------	----------

Prices in USD. Excludes freight, taxes and any local charges.

# 15t

## Jack Stand 89mm Column



3-1

Designed to safely support vehicles, machinery and equipment during repair, maintenance &/ or storage activities:

- 15t (15,000kg) Working Load Limit
- Solid steel engagement head, 100mm dia
- Composite column, 89mm dia
- Die-cast CC401 grade aluminium base, 300mm sq
- Corrosion resistant powder coating
- 10 year UV vinyl wrap

**N.B.** Interchangeable height adjusting inserts available. Inserts sold separately.

250mm	7.5kg	RV100-R750-R25015	\$320.00
300mm	7.7kg	RV100-R750-R30015	\$325.00
400mm	8.2kg	RV100-R750-R40015	\$345.00
500mm	8.7kg	RV100-R750-R50015	\$360.00
600mm	9.2kg	RV100-R750-R60015	\$375.00
700mm	9.8kg	RV100-R750-R70015	\$390.00

Prices in USD. Excludes freight, taxes and any local charges.

# 15t

## Height Adjusting Insert 89mm Column



3-2

- Specifically designed to fit: 15t jack stand
- Solid steel engagement head, 100mm dia
- Interchangeable height adjusting inserts
- CNC machined for precision
- Powder-coated to prevent corrosion
- Customised engagement head available on request
- Storage brackets available to compliment our wall mounted storage, horizontal &/or vertical
- Compliant with applicable regulatory standards

25mm	2.7kg	RV-I-25	\$55.00
50mm	4.1kg	RV-I-50	\$60.00
75mm	5.64kg	RV-I-75	\$70.00
Mounting Bracket		SA-100	\$20.00

Prices in USD. Excludes freight, taxes and any local charges.

# 15t

## Swivel & Winged Ball Head 89mm



3-3

The swivel ball head attachment is a stand alone component that slips straight into the cap of our jack stands to support and align with the dozer blade push arm(s) angle during G.E.T. change.

### 15t Swivel Head

2.95kg	RV-Swivel-Head	\$205.00
Mounting Bracket	SA-100	\$20.00

The winged swivel ball head attachment is a stand alone component that slips straight into the cap of our jack stands to support and cradle the dozer blade push arm(s) during G.E.T. change.

**N.B.** The winged swivel ball head attachment DOES NOT fit in the height adjusting inserts and you may ONLY place either one or the other in the cap of the jack stand.

### 15t Winged Head

200mm	5.6kg	RV-Swivel-Wing	\$280.00
Mounting Bracket	SA-110		\$25.00

Prices in USD. Excludes freight, taxes and any local charges.

# 15t

## Dozer Blade Storage Support Swivel Spigot Insert



3-4

Designed for use on dozer blade during maintenance activities connects the head of the 15t stand and the lower pin connection point of the removed blade.

- 15t (15,000kg) Working Load Limit
- CNC machined solid steel engagement head
- Corrosion resistant powder coating
- Easy maintenance swivel design

Swivel Spigot Insert SRC DZ-SI-15	\$170.00 each
-----------------------------------	---------------

Prices in USD. Excludes freight, taxes and any local charges.

# 15t

## Placement Hook 89mm Column



3-5

- Our custom designed placement hook will make moving your 15t jack stands in and out of position a breeze
- Prevents the need to get under a non-supported load

**N.B.** Stand sold separately.

0.5kg	RV-SRC-Hook	\$55.00
-------	-------------	---------

Prices in USD. Excludes freight, taxes and any local charges.

# 15t

## Wall Mounted Storage Horizontal 89mm Column



3-6

- Specifically designed to fit: 15t jack stands
- Corrosion resistant, 1.6mm aluminium checker plate over 12mm structural plywood
- Purpose built mounting connections to suit composite stands and placement hook
- Easily mounts existing workshop/work-bay for quick and easy access
- Information and instruction labels for operators at point of use
- Neatly and securely stores 4 jack stands and the placement hook
- The vertical board is particularly suited to mounting on the ends of pallet racking in a work area

**N.B.** Mounting brackets included and stands sold separately.

Horizontal 1200x800mm	15.7kg	SA-044-L	\$440.00
Vertical 1600x800mm	20.1kg	SA-085-P	\$505.00

Prices in USD. Excludes freight, taxes and any local charges.

# 25t

## Jack Stand 100mm Column



4-1

Specifically designed to safely support vehicles, machinery and equipment during repair, maintenance &/or storage activities:

- 25t (25,000kg) Working Load Limit
- Solid steel engagement head, 100mm sq
- Composite column, 100mm sq
- Die-cast CC401 grade aluminium base, 300mm sq
- Corrosion resistant powder coating
- 10 year UV vinyl wrap

**N.B.** Interchangeable height adjusting inserts available. Inserts sold separately.

250mm	10.8kg	SRC100-SR750-SR25025	\$460.00
300mm	11.3kg	SRC100-SR750-SR30025	\$475.00
400mm	12.4kg	SRC100-SR750-SR40025	\$505.00
500mm	13.25kg	SRC100-SR750-SR50025	\$515.00
600mm	14.3kg	SRC100-SR750-SR60025	\$530.00
700mm	15.2kg	SRC100-SR750-SR70025	\$545.00

Prices in USD. Excludes freight, taxes and any local charges.

# 25t

## Height Adjusting Insert 100mm Column



4-2

- Specifically designed to fit: 25t jack stand
- Solid steel engagement head, 100mm dia
- Interchangeable height adjusting inserts
- CNC machined for precision
- Powder-coated to prevent corrosion
- Customised engagement head available on request
- Storage brackets available to compliment our wall mounted storage, horizontal &/or vertical
- Compliant with applicable regulatory standards

### Flat Face

25mm	2.5kg	SRC-I-25-F	\$50.00
50mm	4kg	SRC-I-50-F	\$55.00
75mm	5.75kg	SRC-I-75-F	\$65.00
Mounting Bracket		SA-100	\$20.00

Prices in USD. Excludes freight, taxes and any local charges.

# 25t

## Dozer Blade Storage Support Swivel Spigot Insert



4-3

Designed for use on dozer blade during maintenance activities connects the head of the 25t stand and the lower pin connection point of the removed blade.

- 25t (25,000kg) Working Load Limit
- CNC machined solid steel engagement head
- Corrosion resistant powder coating
- Easy maintenance swivel design

Swivel Spigot Insert SRC_DZ-SI-25	\$170.00 each
-----------------------------------	---------------

Prices in USD. Excludes freight, taxes and any local charges.

# 25t

## Swivel & Winged Ball Head 100mm



4-4

The swivel ball head attachment is a stand alone component that slips straight into the cap of our jack stands to support and align with the dozer blade push arm(s) angle during G.E.T. change.

### 25t Swivel Head

3kg	SRC-Swivel-Head	\$205.00
Mounting Bracket	SA-100	\$20.00

The winged swivel ball head attachment is a stand alone component that slips straight into the cap of our jack stands to support and cradle the dozer blade push arm(s) during G.E.T. change.

**N.B.** The winged swivel ball head attachment DOES NOT fit in the height adjusting inserts and you may ONLY place either one or the other in the cap of the jack stand.

### 25t Winged Head

200mm	5.6kg	RV-Swivel-Wing	\$280.00
Mounting Bracket		SA-110	\$25.00

Prices in USD. Excludes freight, taxes and any local charges.

# 25t

## Placement Hook 100mm Column



4-5

- Our custom designed placement hook will make moving your 25t jack stands in and out of position a breeze
- Prevents the need to get under a non-supported load

**N.B.** Stand sold separately.

0.5kg	RV-SRC-Hook	\$55.00
-------	-------------	---------

Prices in USD. Excludes freight, taxes and any local charges.

# 25t

## Wall Mounted Storage Horizontal 100mm Column



4-6

- Specifically designed to fit: 25t jack stands
- Corrosion resistant, 1.6mm aluminium checker plate over 12mm structural plywood
- Purpose built mounting connections to suit composite stands and placement hook
- Easily mounts existing workshop/work-bay for quick and easy access
- Information and instruction labels for operators at point of use
- Neatly and securely stores 4 jack stands and the placement hook
- The vertical board is particularly suited to mounting on the ends of pallet racking in a work area

**N.B.** Mounting brackets included and stands sold separately.

Horizontal 1200x800mm	15.7kg	SA-044-L	\$440.00
Vertical 1600x800mm	20.1kg	SA-085-P	\$505.00

Prices in USD. Excludes freight, taxes and any local charges.

## Get your gear off the ground.

The **WORLD'S LIGHTEST JACK STANDS** that address personal injury risk and improve functionality, increasing productivity and operational savings.



### 'Designed and Certified in Australia'

Independently tested by University of Southern Queensland (USQ), compliant with Australian Standards: AS 2538:2016 | AS 2693:2007 and Patented.

## 25t

### Workshop Package Including Portable Storage Unit



5-1

#### Includes; 25t Jack Stands

2 x 400mm	12.4kg	SRC100-SR750-SR40025
2 x 500mm	13.25kg	SRC100-SR750-SR50025
2 x 600mm	14.3kg	SRC100-SR750-SR60025
2 x 700mm	15.2kg	SRC100-SR750-SR70025

#### Height Adjusting Inserts

4 x 25mm	2.3kg	SRC-I-25
4 x 50mm	3.8kg	SRC-I-50
4 x 75mm	5.2kg	SRC-I-75

#### Placement Hook

1 x Placement Hook	0.5kg	RV-SRC-Hook
--------------------	-------	-------------

#### 5-S Mounting Boards

2 x Vertical 1600x800mm	20.1kg	SA-085-P
-------------------------	--------	----------

#### 5S Mobile Mounting Kit\*

\*Complimentary with every Workshop Package with a value of \$1,000.

25t Total Workshop Package	25t-4567Kit	\$6,115.00
----------------------------	-------------	------------

Variations available upon request.

Prices in USD. Excludes freight, taxes and any local charges.

## 25t

### Jack Stand 100mm Column



5-2

Specifically designed to safely support vehicles, machinery and equipment during repair, maintenance &/or storage activities:

- 25t (25,000kg) Working Load Limit
- Solid steel engagement head, 100mm sq
- Composite column, 100mm sq
- Die-cast CC401 grade aluminium base, 300mm sq
- Corrosion resistant powder coating
- 10 year UV vinyl wrap

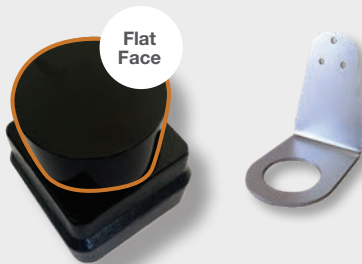
**N.B.** Interchangeable height adjusting inserts available. Inserts sold separately.

400mm	12.4kg	SRC100-SR750-SR40025	\$505.00
500mm	13.25kg	SRC100-SR750-SR50025	\$515.00
600mm	14.3kg	SRC100-SR750-SR60025	\$530.00
700mm	15.2kg	SRC100-SR750-SR70025	\$545.00

Prices in USD. Excludes freight, taxes and any local charges.

## 25t

### Height Adjusting Insert 100mm Column



5-3

- Specifically designed to fit: 25t jack stand
- Solid steel engagement head, 100mm dia
- Interchangeable height adjusting inserts
- CNC machined for precision
- Powder-coated to prevent corrosion
- Customised engagement head available on request
- Storage brackets available to compliment our wall mounted storage, horizontal &/or vertical
- Compliant with applicable regulatory standards

#### Flat Face

25mm	2.5kg	SRC-I-25-F	\$50.00
50mm	4kg	SRC-I-50-F	\$55.00
75mm	5.75kg	SRC-I-75-F	\$65.00
Mounting Bracket		SA-100	\$20.00

Prices in USD. Excludes freight, taxes and any local charges.

## 25t

### Placement Hook 100mm Column



5-4

- Our custom designed placement hook will make moving your 25t jack stands in and out of position a breeze
- Prevents the need to get under a non-supported load

**N.B.** Stand sold separately.

0.5kg	RV-SRC-Hook	\$55.00
-------	-------------	---------

Prices in USD. Excludes freight, taxes and any local charges.

## 25t

### Wall Mounted Storage: Vertical



5-5

- Specifically designed to fit: 25t jack stands
- Corrosion resistant, 1.6mm aluminium checker plate over 12mm plywood
- Purpose built mounting connections to suit composite stands and placement hook
- Easily mounts existing workshop/work-bay for quick and easy access
- Neatly and securely stores 4 jack stands and the placement hook

**N.B.** Mounting brackets included and stands sold separately.

Vertical 1600x800mm	20.1kg	SA-085-P	\$505.00
---------------------	--------	----------	----------

Prices in USD. Excludes freight, taxes and any local charges.

# 35t

## Jack Stand T2 125mm Column

6-1



Specifically designed to safely support vehicles, machinery and equipment during repair, maintenance &/or storage activities:

- 35t (35,000kg) Working Load Limit
- Solid steel engagement head
- Composite column, 125mm sq
- Fabricated steel base assembly, 365mm sq
- Corrosion resistant powder coating
- 10 year UV vinyl wrap

**N.B.** Interchangeable height adjusting inserts available. Inserts sold separately.

400mm	27kg	CS-35-400	\$1,170.00
500mm	29kg	CS-35-500	\$1,210.00
600mm	30kg	CS-35-600	\$1,245.00
700mm	31kg	CS-35-700	\$1,275.00
800mm	47kg	CS-35-800	\$1,315.00

Prices in USD. Excludes freight, taxes and any local charges.

# 35t

## Jack Stand T3 125mm Column

6-2



Specifically designed to safely support vehicles, machinery and equipment during repair, maintenance &/or storage activities:

- 35t (35,000kg) Working Load Limit
- Solid steel engagement head
- Composite column, 125mm sq
- Fabricated steel base assembly, 500mm sq
- 16mm aluminium base plate
- Corrosion resistant powder coating
- 10 year UV vinyl wrap

**N.B.** Interchangeable height adjusting inserts available. Inserts sold separately.

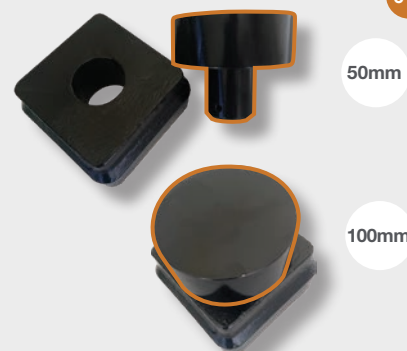
900mm	48kg	CS-35-900	\$1,530.00
1000mm	50kg	CS-35-1000	\$1,560.00
1100mm	51kg	CS-35-1100	\$1,580.00
1200mm	52kg	CS-35-1200	\$1,595.00
1300mm	53kg	CS-35-1300	\$1,645.00
1350mm	54kg	CS-35-1350	\$1,700.00

Prices in USD. Excludes freight, taxes and any local charges.

# 35t

## Height Adjusting Insert 125mm

6-3



50mm

100mm

- Specifically designed to fit: 35t bucket stand
- Solid steel engagement head
- Interchangeable height adjusting inserts
- CNC machined for precision
- Powder-coated to prevent corrosion
- Customised engagement head available on request
- Compliant with applicable regulatory standards

50mm	5.75kg	125-I-50-R	\$105.00
100mm	10.5kg	125-I-100-R	\$130.00

Prices in USD. Excludes freight, taxes and any local charges.

# 35t

## Swivel & Winged Ball Head 125mm

6-4



35t Swivel

35t Winged

The swivel ball head attachment is a stand alone component that slips straight into the cap of our jack stands to support and align with the dozer blade push arm(s) angle during G.E.T. change.

### 35t Swivel Head

4.5kg	T3-Swivel-Head	\$335.00
-------	----------------	----------

The winged swivel ball Head attachment is a stand alone component that slips straight into the cap of our jack stands to support and cradle the dozer blade push arm(s) during G.E.T. change.

**N.B.** The winged swivel ball head attachment DOES NOT fit in the height adjusting inserts and you may ONLY place either one or the other in the cap of the jack stand.

### 35t Winged Head

310mm	8.6kg	T3-Swivel-Wing	\$415.00
-------	-------	----------------	----------

Prices in USD. Excludes freight, taxes and any local charges.

# 35t

## Placement Trolley

6-5



Trolley

- The placement trolley specifically designed to mount onto 35t type 2 & 3; jack stands to manoeuvre them in and out of position. It has an extendable handle of 1.2 to 2m to keep technicians out of the line of fire and reduces the risk of personal injury that is related to the manual handling of jack stands.

**N.B.** Stand sold separately.

7kg	T-001	\$420.00
-----	-------	----------

Prices in USD. Excludes freight, taxes and any local charges.

# 35t

## Placement Trolley: Adapter Plates

6-6



T2

T3

- Secure the adapter plate attachment on the base of 35t type 2 & 3.

T2	1.2kg	017-113 AP-T2	\$45.00
T3	1.5kg	017-111 AP-T3	\$60.00

Prices in USD. Excludes freight, taxes and any local charges.

## Get your gear off the ground.

The **WORLD'S LIGHTEST JACK STANDS** that address personal injury risk and improve functionality, increasing productivity and operational savings.



### 'Designed and Certified in Australia'

Independently tested by University of Southern Queensland (USQ), compliant with Australian Standards: AS 2538:2016 | AS 2693:2007 and Patented.

## 50t

### Jack Stand T1 125mm Column

7-1



Specifically designed to safely support vehicles, machinery and equipment during repair, maintenance &/or storage activities:

- 50t (50,000kg) Working Load Limit
- Solid steel engagement head
- Composite column, 125mm sq
- CNC machined, fabricated steel base, 215mm sq
- Fabricated steel sub-frame
- Corrosion resistant powder coating
- 10 year UV vinyl wrap

**N.B.** Interchangeable height adjusting inserts available. Inserts sold separately.

300mm	16.5kg	CS-50-300	\$1,020.00
400mm	18kg	CS-50-400	\$1,075.00

Prices in USD. Excludes freight, taxes and any local charges.

## 50t

### Jack Stand T2 125mm Column

7-2



Specifically designed to safely support vehicles, machinery and equipment during repair, maintenance &/or storage activities:

- 50t (50,000kg) Working Load Limit
- Solid steel engagement head
- Composite column, 125mm sq
- Laser cut, fabricated steel base, 365mm sq
- Fabricated steel sub-frame
- Corrosion resistant powder coating
- 10 year UV vinyl wrap

**N.B.** Interchangeable height adjusting inserts available. Inserts sold separately.

500mm	31kg	CS-50-500	\$1,410.00
600mm	32kg	CS-50-600	\$1,435.00
700mm	33kg	CS-50-700	\$1,455.00

Prices in USD. Excludes freight, taxes and any local charges.

## 50t

### Jack Stand T3 125mm Column

7-3



Specifically designed to safely support vehicles, machinery and equipment during repair, maintenance &/or storage activities:

- 50t (50,000kg) Working Load Limit
- Solid steel engagement head
- Composite column, 125mm sq
- Laser cut, fabricated steel base, 500mm sq
- Chromoly bracing
- Corrosion resistant powder coating
- 10 year UV vinyl wrap

**N.B.** Interchangeable height adjusting inserts available. Inserts sold separately.

800mm	55kg	CS-50-800	\$2,150.00
900mm	56kg	CS-50-900	\$2,185.00
1000mm	57kg	CS-50-1000	\$2,235.00
1100mm	58.5kg	CS-50-1100	\$2,285.00
1200mm	60kg	CS-50-1200	\$2,340.00
1350mm	62kg	CS-50-1350	\$2,485.00

Prices in USD. Excludes freight, taxes and any local charges.

## 50t

### Heavy Dozer Stand - DZ Off Set Base

7-4



Specifically designed to safely support dozers, with offset base to provide track grouser clearance, during repair, maintenance &/or storage activities:

- 50t (50,000kg) Working Load Limit
- Solid steel engagement head
- Composite column, 125mm sq
- Laser cut, fabricated steel base, 500mm sq
- Corrosion resistant powder coating
- 10 year UV vinyl wrap

**N.B.** Interchangeable height adjusting inserts available. Inserts sold separately.

#### D10

700mm	DZ-50-700	\$2,075.00
750mm	DZ-50-750	\$2,150.00
1100mm	DZ-50-1100	\$2,285.00

#### D11

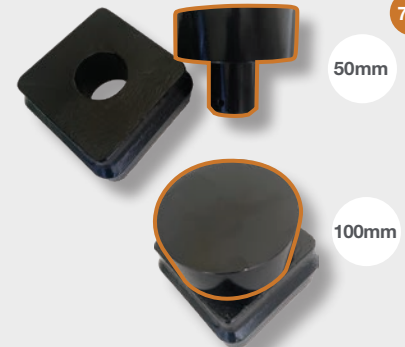
800mm	DZ-50-800	\$2,150.00
850mm	DZ-50-850	\$2,220.00
1200mm	DZ-50-1200	\$2,340.00

Prices in USD. Excludes freight, taxes and any local charges.

## 50t

### Height Adjusting Insert 125mm

7-5



- Specifically designed to fit: 125mm columns
- Solid steel engagement head
- Interchangeable height adjusting inserts
- CNC machined for precision
- Powder-coated to prevent corrosion
- Customised engagement head available on request
- Compliant with applicable regulatory standards

**N.B.** The swivel ball head attachment DOES NOT fit in height adjusting inserts: you may place either one or the other in the cap of the jack stand.

50mm	5.75kg	125-I-50-R	\$105.00
100mm	10.5kg	125-I-100-R	\$130.00

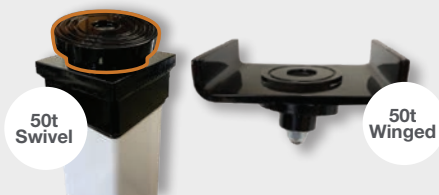
Prices in USD. Excludes freight, taxes and any local charges.



50t

Swivel & Winged Ball Head  
125mm

8-1



50t Swivel

50t Winged

The swivel ball head attachment is a stand alone component that slips straight into the cap of our jack stands to support and align with the dozer blade push arm(s) angle during G.E.T. change.

**50t Swivel Head**

4.5kg	T3-Swivel-Head	\$335.00
-------	----------------	----------

The winged swivel ball head attachment is a stand alone component that slips straight into the cap of our jack stands to support and cradle the dozer blade push arm(s) during G.E.T. change.

**N.B.** The winged swivel ball head attachment DOES NOT fit in the height adjusting inserts and you may ONLY place either one or the other in the cap of the jack stand.

**50t Winged Head**

310mm	8.6kg	T3-Swivel-Wing	\$415.00
-------	-------	----------------	----------

Prices in USD. Excludes freight, taxes and any local charges.

50t

## Placement Trolley

8-2



Trolley

- The placement trolley specifically designed to mount onto type 2, 3 & DZ; 50t jack stands to manoeuvre them in and out of position. It has a extendable handle of 1.2 to 2m to keep technicians out of the line of fire and reduces the risk of personal injury that is related to the manual handling of jack stands.

**N.B.** Stand sold separately.

7kg	T-001	\$420.00
-----	-------	----------

Prices in USD. Excludes freight, taxes and any local charges.

50t

Placement Trolley:  
Adapter Plates

8-3



- Secure the adapter plate attachment on the base of 50t type 1, 2, 3 & DZ.

T1	1kg	017-119 AP-T1	\$45.00
T2	1.2kg	017-113 AP-T2	\$45.00
T3	1.5kg	017-111 AP-T3	\$60.00
DZ	1kg	DZ-TAP	\$45.00

Prices in USD. Excludes freight, taxes and any local charges.

80t

## Jack Stand

8-4

COMING SOON

Prices in USD. Excludes freight, taxes and any local charges.

COMPOSITE  
STANDSGet your gear  
off the ground.

The **WORLD'S LIGHTEST JACK STANDS** that address **personal injury risk and improve functionality, increasing productivity and operational savings.**



**'Designed and Certified in Australia'**

Independently tested by University of Southern Queensland (USQ), compliant with Australian Standards: AS 2538:2016 | AS 2693:2007 and Patented.



The **WORLD'S LIGHTEST JACK STANDS** that address **personal injury risk and improve functionality, increasing productivity and operational savings.**

**'Designed and Certified in Australia'**

Independently tested by University of Southern Queensland (USQ), compliant with Australian Standards: AS 2538:2016 | AS 2693:2007 and Patented.

## 25t & 50t Jack Stands CAT D10 Kit



9-1

Designed to suit CAT D10 dozer with offset base to allow additional grouser clearance.

- 25t (25,000kg) Working Load Limit stands for blade and push arm support with die-cast, CC401 aluminium, 300mm sq base
- 50t (50,000kg) Working Load Limit stands for dozers with laser cut, fabricated steel, 500mm sq base
- Corrosion resistant powder coating
- 10 year UV vinyl wrap on composite columns

**N.B.** Interchangeable height adjusting inserts available. Inserts sold separately.

### 25t Jack Stands

#### Blade Stands - Arms Removed

2 x 450mm	14kg	SRC100-SR750-SR45025	\$1,005.00
2 x Spigot Insert	5kg	CPS-025-023-011	\$410.00

#### Push Arm Support - Blade Attached

2 x 700mm	15.5kg	SRC100-SR750-SR70025	\$1,085.00
2 x Swivel Insert Wing	7kg	SRC-Swivel Wing	\$445.00
1 x 5S Storage Board	20kg	SS-002	\$505.00

### 50t Jack Stands

#### Machine Stands

2 x 750mm	60kg	DZ-50-750	\$4,205.00
2 x 1100mm	65kg	DZ-50-1100	\$4,565.00
2 x CAT D10 Rear Insert		DZ-RI-D10	\$785.00
4 x Adapter	1.6kg	DZ-TAP	\$180.00

#### G.E.T Maintenance Stands

2 x 1350mm	68kg	CS-50-1349	\$4,970.00
2 x T3 Swivel Wing Insert	9kg	CPS-025-024-005	\$825.00
1 x T3 Placement Trolley	6kg	Trolley	\$415.00
1 x Trolley Storage Hook	1kg	CPS-025-017-033	\$65.00
2 x Adapter	2kg	DZ-TAP	\$90.00

**Total Package \$19,550.00**

Prices in USD. Excludes freight, taxes and any local charges.

## 25t & 50t Jack Stands CAT D11 Kit



9-2

Designed to suit CAT D11 dozer with offset base to allow additional grouser clearance.

- 25t (25,000kg) Working Load Limit stands for blade and push arm support with die-cast, CC401 aluminium, 300mm sq base
- 50t (50,000kg) Working Load Limit stands for dozers with laser cut, fabricated steel, 500mm sq base
- Corrosion resistant powder coating
- 10 year UV vinyl wrap on composite columns

**N.B.** Interchangeable height adjusting inserts available. Inserts sold separately.

### 25t Jack Stands

#### Blade Stands - Arms Removed

2 x 450mm	14kg	SRC100-SR750-SR45025	\$1,005.00
2 x Spigot Insert	5kg	CPS-025-023-011	\$410.00

#### Push Arm Support - Blade Attached

2 x 700mm	15.5kg	SRC100-SR750-SR70025	\$1,085.00
2 x Swivel Insert Wing	7kg	SRC-Swivel Wing	\$445.00
1 x 5S Storage Board	20kg	SS-002	\$505.00

### 50t Jack Stands

#### Machine Stands

2 x 800mm	62kg	DZ-50-800	\$4,360.00
2 x 1200mm	66kg	DZ-50-1200	\$4,675.00
2 x CAT D11 Rear Insert		DZ-RI-D11	\$850.00
4 x Adapter	1.6kg	DZ-TAP	\$180.00

#### G.E.T Maintenance Stands

2 x 1350mm	68kg	CS-50-1349	\$4,970.00
2 x T3 Swivel Wing Insert	9kg	CPS-025-024-005	\$825.00
1 x T3 Placement Trolley	6kg	Trolley	\$415.00
1 x Trolley Storage Hook	1kg	CPS-025-017-033	\$65.00
2 x Adapter	2kg	DZ-TAP	\$90.00

**Total Package \$19,880.00**

Prices in USD. Excludes freight, taxes and any local charges.

## 25t & 50t Jack Stands CAT D10 + CAT D11 Combo Package



9-3

Designed to suit CAT D10 and CAT D11 dozers with offset base to allow additional grouser clearance.

- 25t (25,000kg) Working Load Limit stands for blade and push arm support with die-cast, CC401 aluminium, 300mm sq base
- 50t (50,000kg) Working Load Limit stands for dozers with laser cut, fabricated steel, 500mm sq base
- Corrosion resistant powder coating
- 10 year UV vinyl wrap on composite columns

**N.B.** Interchangeable height adjusting inserts available. Inserts sold separately.

### 25t Jack Stands

#### Blade Stands - Arms Removed

2 x 450mm	14kg	SRC100-SR750-SR45025	\$1,005.00
2 x Spigot Insert	5kg	CPS-025-023-011	\$410.00

#### Push Arm Support - Blade Attached

2 x 700mm	15.5kg	SRC100-SR750-SR70025	\$1,085.00
2 x Swivel Insert Wing	7kg	SRC-Swivel Wing	\$445.00
1 x 5S Storage Board	20kg	SS-002	\$505.00

### 50t Jack Stands

#### Machine Stands

2 x 750mm	60kg	DZ-50-750	\$4,205.00
2 x 1100mm	65kg	DZ-50-1100	\$4,565.00
2 x CAT D11 Rear Insert		DZ-RI-D11	\$885.00
2 x CAT D10 Rear Insert		DZ-RI-D10	\$785.00
2 x 100mm Insert	10kg	125I-100-R	\$230.00
4 x Adapter	1.6kg	DZ-TAP	\$180.00

#### G.E.T Maintenance Stands

2 x 1350mm	68kg	CS-50-1349	\$4,970.00
2 x T3 Swivel Wing Insert	9kg	CPS-025-024-005	\$825.00
1 x T3 Placement Trolley	6kg	Trolley	\$415.00
1 x Trolley Storage Hook	1kg	CPS-025-017-033	\$65.00
2 x Adapter	2kg	DZ-TAP	\$90.00

**Total Package \$20,665.00**

Prices in USD. Excludes freight, taxes and any local charges.

# 25t

## Jack Stand 100mm Column



10-1

Specifically designed to safely support vehicles, machinery and equipment during repair, maintenance &/or storage activities:

- 25t (25,000kg) Working Load Limit
- Solid steel engagement head, 100mm sq
- Composite column, 100mm sq
- Die-cast CC401 grade aluminium base, 300mm sq
- Corrosion resistant powder coating
- 10 year UV vinyl wrap

**N.B.** Interchangeable height adjusting inserts available. Inserts sold separately.

450mm	13kg	SRC100-SR750-SR45025	\$510.00
700mm	15.2kg	SRC100-SR750-SR70025	\$545.00

Prices in USD. Excludes freight, taxes and any local charges.

# 25t

## Winged Swivel Ball Head 100mm



10-2

The winged swivel ball head attachment is a stand alone component that slips straight into the cap of our jack stands to support and cradle the dozer blade push arm(s) during G.E.T. change.

**N.B.** The winged swivel ball head attachment DOES NOT fit in the height adjusting inserts and you may ONLY place either one or the other in the cap of the jack stand.

25t	200mm	5.6kg	SRC-Swivel-Wing	\$280.00
-----	-------	-------	-----------------	----------

Prices in USD. Excludes freight, taxes and any local charges.

# 25t

## Dozer Blade Storage Support Swivel Spigot Insert



10-3

Designed for use on dozer blade during maintenance activities connects the head of the 25t stand and the lower pin connection point of the removed blade.

- 25t (25,000kg) Working Load Limit
- CNC machined solid steel engagement head
- Corrosion resistant powder coating
- Easy maintenance swivel design

Swivel Spigot Insert SRC	DZ-SI-25	\$170.00 each
--------------------------	----------	---------------

Prices in USD. Excludes freight, taxes and any local charges.

# 25t

## Wall Mounted Storage: Vertical



10-4

- Specifically designed to fit: 25t jack stands
- Corrosion resistant, 1.6mm aluminium checker plate over 12mm plywood
- Purpose built mounting connections to suit composite stands and placement hook
- Easily mounts existing workshop/work-bay for quick and easy access
- Neatly and securely stores 4 jack stands and the placement hook

**N.B.** Mounting brackets included and stands sold separately.

Vertical 1600x800mm	20.1kg	SA-085-P	\$505.00
---------------------	--------	----------	----------

Prices in USD. Excludes freight, taxes and any local charges.

# 50t

## Jack Stand T3 125mm Column



10-5

Specifically designed to safely support vehicles, machinery and equipment during repair, maintenance &/or storage activities:

- 50t (50,000kg) Working Load Limit
- Solid steel engagement head
- Composite column, 125mm sq
- Laser cut, fabricated steel base, 500mm sq
- Corrosion resistant powder coating
- 10 year UV vinyl wrap

**N.B.** Interchangeable height adjusting inserts available. Inserts sold separately.

1350mm	62kg	CS-50-1350	\$2,485.00
--------	------	------------	------------

Prices in USD. Excludes freight, taxes and any local charges.

# 50t

## Heavy Dozer Stand - DZ Off Set Base



10-6

Specifically designed to safely support dozers, with offset base to provide track grouser clearance, during repair, maintenance &/or storage activities:

- 50t (50,000kg) Working Load Limit
- Solid steel engagement head
- Composite column, 125mm sq
- Laser cut, fabricated steel base, 500mm sq
- Corrosion resistant powder coating
- 10 year UV vinyl wrap

**N.B.** Interchangeable height adjusting inserts available. Inserts sold separately.

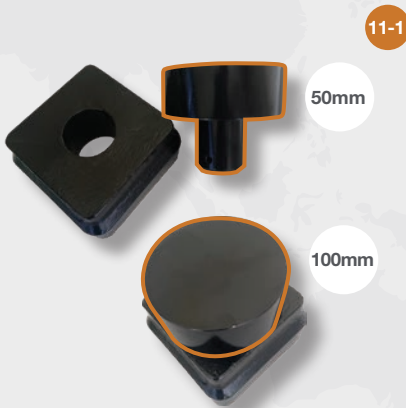
<b>D10</b>		
700mm	DZ-50-700	\$2,075.00
750mm	DZ-50-750	\$2,150.00
1100mm	DZ-50-1100	\$2,285.00
<b>D11</b>		
800mm	DZ-50-800	\$2,150.00
850mm	DZ-50-850	\$2,220.00
1200mm	DZ-50-1200	\$2,340.00

<b>Insert +100mm;</b>		
	125-I-100-R	\$115.00

Prices in USD. Excludes freight, taxes and any local charges.

# 50t

## Height Adjusting Insert 125mm



- Specifically designed to fit: 50t type 3 & DZ
- Solid steel engagement head
- Interchangeable height adjusting inserts
- CNC machined for precision
- Powder-coated to prevent corrosion
- Customised engagement head available on request
- Compliant with applicable regulatory standards

50mm	5.75kg	125-I-50-R	\$105.00
100mm	10.5kg	125-I-100-R	\$130.00

Prices in USD. Excludes freight, taxes and any local charges.

# 50t

## CAT D10 & CAT D11 Rear Stand Insert



Specifically designed to mount on the rear stand to match the housing profile of the CAT D10 dozer.

Specifically designed to mount on the rear stand to match the housing profile of the CAT D11 dozer.

- 50t (50,000kg) Working Load Limit
- Solid steel engagement head
- Laser cut, fabricated steel
- Corrosion resistant powder coating
- Set of 2 inserts

CAT D10	DZ-RI-D10	\$785.00 set
CAT D11	DZ-RI-D11	\$885.00 set

Prices in USD. Excludes freight, taxes and any local charges.

# 50t

## Swivel Ball Head 125mm



The swivel ball head attachment is a stand alone component that slips straight into the cap of our jack stands to support and align with the dozer blade push arm(s) angle during G.E.T. change.

**N.B.** The swivel ball head attachment DOES NOT fit in the height adjusting inserts and you may ONLY place either one or the other in the cap of the jack stand.

50t	4.5kg	T3-Swivel-Head	\$335.00
-----	-------	----------------	----------

Prices in USD. Excludes freight, taxes and any local charges.

# 50t

## Winged Swivel Ball Head 125mm



The winged swivel ball head attachment is a stand alone component that slips straight into the cap of our jack stands to support and cradle the dozer blade push arm(s) during G.E.T. change.

**N.B.** The winged swivel ball head attachment DOES NOT fit in the height adjusting inserts and you may ONLY place either one or the other in the cap of the jack stand.

50t	310mm	8.6kg	T3-Swivel-Wing	\$415.00
-----	-------	-------	----------------	----------

Prices in USD. Excludes freight, taxes and any local charges.

# 50t

## Placement Trolley



- The placement trolley specifically designed to mount onto type T3 & DZ bases; to manoeuvre in and out of position. It has an extendable handle of 1.2 to 2m to keep technicians out of the line of fire and reduce the risk of personal injury related to manual handling jack stands.

**N.B.** Stand sold separately.

7kg	T-001	\$420.00
-----	-------	----------

Prices in USD. Excludes freight, taxes and any local charges.

# 50t

## Placement Trolley: Adapter Plates



- Secure the adapter plate attachment on the base of 35t & 50t type T3 & DZ

T3	1.5kg	T3-TAP	\$60.00
DZ	1kg	DZ-TAP	\$45.00

Prices in USD. Excludes freight, taxes and any local charges.