

## Get your gear off the ground.

The **WORLD'S LIGHTEST JACK STANDS** that address personal injury risk and improve functionality, increasing productivity and operational savings.



### 'Designed and Certified in Australia'

Independently tested by University of Southern Queensland (USQ), compliant with Australian Standards: AS 2538:2016 | AS 2693:2007 and Patented.

## 12.5t

### Bucket Stand 125mm Column



2-1

Specifically designed to safely support buckets and booms, of machinery during repair and maintenance:

- 12.5t (12,500kg) Working Load Limit
- Solid steel engagement head
- Composite column, 125mm sq
- CNC machined 16mm aluminium plate base, 920mm dia
- Chromoly bracing tubes
- Corrosion resistant powder coating
- 10 year UV vinyl wrap

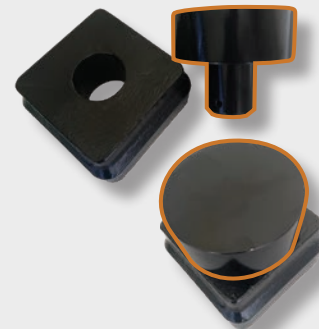
**N.B.** Interchangeable height adjusting inserts available. Inserts sold separately.

|        |      |                  |            |
|--------|------|------------------|------------|
| 1400mm | 57kg | CPS-025-005-1400 | \$2,980.00 |
| 1500mm | 58kg | CPS-025-005-1500 | \$3,035.00 |
| 1600mm | 59kg | CPS-025-005-1600 | \$3,120.00 |
| 1700mm | 60kg | CPS-025-005-1700 | \$3,180.00 |
| 1800mm | 61kg | CPS-025-005-1800 | \$3,240.00 |
| 2000mm | 63kg | CPS-025-005-2000 | \$3,300.00 |
| 2100mm | 64kg | CPS-025-005-2100 | \$3,360.00 |
| 2200mm | 65kg | CPS-026-005-2200 | \$3,420.00 |

Prices in USD. Excludes freight, taxes and any local charges.

## 12.5t

### Height Adjusting Insert 125mm



2-2

50mm

100mm

- Specifically designed to fit: 12.5t bucket stand
- Solid steel engagement head
- Interchangeable height adjusting inserts
- CNC machined for precision
- Powder-coated to prevent corrosion
- Customised engagement head available on request
- Compliant with applicable regulatory standards

|       |        |             |          |
|-------|--------|-------------|----------|
| 50mm  | 5.75kg | 125-I-50-R  | \$105.00 |
| 100mm | 10.5kg | 125-I-100-R | \$130.00 |

Prices in USD. Excludes freight, taxes and any local charges.

## 12.5t

### Swivel & Winged Ball Head 125mm



2-3

The swivel ball head attachment is a stand alone component that slips straight into the cap of our jack stands to support and align with angled frame of a dozer push arm.

#### 12.5t Swivel Head

|       |                |          |
|-------|----------------|----------|
| 4.5kg | T3-Swivel-Head | \$335.00 |
|-------|----------------|----------|

The Winged Swivel Ball Head attachment is a stand alone component that slips straight into the cap of our Jack Stands to support and cradle the dozer push arm(s) during work.

**N.B.** The winged swivel ball head attachment DOES NOT fit in the height adjusting inserts and you may ONLY place either one or the other in the cap of the jack stand.

#### 12.5t Winged Head

|       |       |                |          |
|-------|-------|----------------|----------|
| 310mm | 8.6kg | T3-Swivel-Wing | \$415.00 |
|-------|-------|----------------|----------|

Prices in USD. Excludes freight, taxes and any local charges.

## 12.5t

### Bucket Stand Wheel Kit Wheels & Mounting Assembly x 3



2-4

The swivel castor wheels (x3) are specifically designed to mount on to the base of the bucket stand. Using a foot lever to lift and lock into place enabling easy manoeuvrability in and around the workshop floor for a single user.

- Heavy duty industrial grade wheel (100 mm dia)
- 360 degree swivel castor
- Powder coated mounting assembly
- Foot lever lift

**N.B.** Bucket stand sold separately.

|             |       |              |          |
|-------------|-------|--------------|----------|
| 250mmx150mm | 7.8kg | BS-Wheel Kit | \$365.00 |
|-------------|-------|--------------|----------|

Prices in USD. Excludes freight, taxes and any local charges.